

## Swapping a 24VDC MyPin PID controller for a 24VDC Novus PID

Parts List:

Novus PID controller

Small screwdriver - one is provided with fermentation panel

18awg wire - panel ships with spare for future expansion; if more is required, use 18awg stranded wire

Step 1. Unplug fermentation panel from wall

2. Remove MyPin, mount Novus in slot with included snap brackets

3. Wiring - Thermocouple wiring is on pins 1-3, red wire from PT thermocouple must lead to pin 3, other 2 don't matter. Power is supplied on pins 8-9. 24VDC+ is jumped from pin 9 to relay pin 6 if valves are 24V. Pin 7 leads to where valve is wired in. Once the wiring is complete, you can plug panel back into wall outlet.

4. Programming - Hold P Key for 5 seconds to enter setup. Press P again to cycle parameters.

Pb - 0

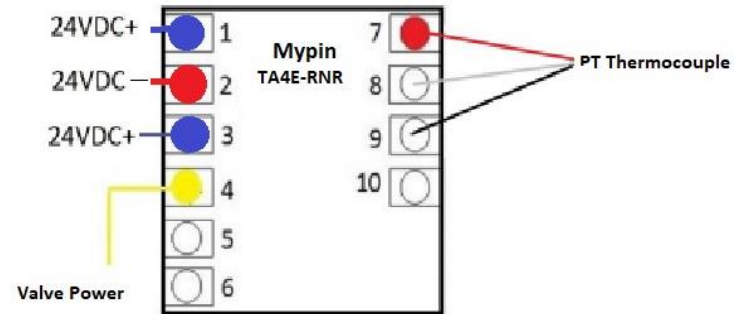
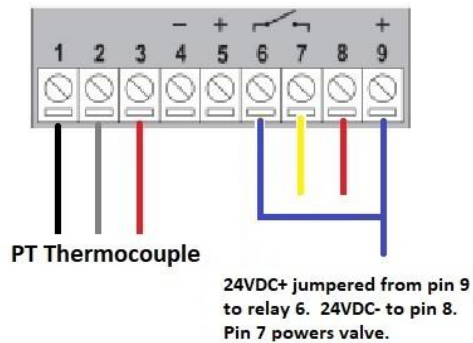
ACt - Dlr For Cooling

Out2 - Ctrl

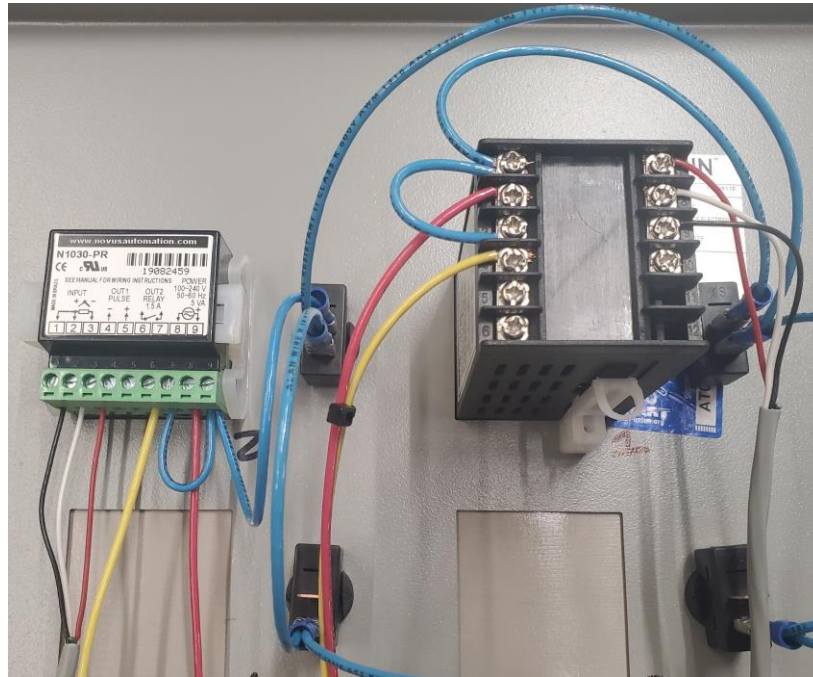
Hold P Key for 5 more seconds to enter different parameter group

TyPE - PT If using PT Thermocouples

Unit - C or F As Desired



Depending on age of panel, red & blue color coding may be opposite - verify at switching power supply if unsure



## Swapping a 110V MyPin PID controller for a 110V Novus PID

Parts List:

Novus PID controller

Small screwdriver - one is provided with fermentation panel

18awg wire - panel ships with spare for future expansion; if more is required, use 18awg stranded wire

Step 1. Unplug fermentation panel from wall

2. Remove MyPin, mount Novus in slot with included snap brackets

3. Wiring - Thermocouple wiring is on pins 1-3, red wire from PT thermocouple must lead to pin 3, other 2 don't matter. Power is supplied on pins 8-9. 110V live fed from the switch goes to pin 9. 110V neutral (white wire) goes to pin 8. Pin 6 & 7 is your valve relay – valve power on one, yellow wire leading to where solenoid is wired in on other. See picture below. With the screw terminals being positioned differently you may have to extend or replace some wiring. Once the wiring is complete, you can plug panel back into wall outlet.

4. Programming - Hold P Key for 5 seconds to enter setup. Press P again to cycle parameters.

Pb - 0

ACt - Dlr For Cooling

Out2 - Ctrl

Hold P Key for 5 more seconds to enter different parameter group

TyPE - PT If using PT Thermocouples

Unit - C or F As Desired

